

Setting up RCC.msi (Rnotify Connector) for POSP OO

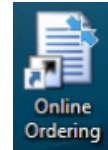
- 1) Remote access to the merchant PC and go to gimmegrub.com/rcc.msi (if the PC is a 32 bit use gimmegrub.com/rcc32.msi)
- 2) On your end bring up the merchants account in admin.pointofsuccess.com > Go to 'find restaurant by name' > enter the first three lets of the name > go to the merchants account > click 'Customize Website' > Take note of the 'Ordering URL'

tiarosagilbert

- 3) Run the .msi – Then look for an icon on the desktop called Online Ordering. Click to open. It will add a small icon to the taskbar. Click the small icon to open the program. It may also be in the hidden area with the Up arrow.



- a. At the top look for 'User Name'
- b. Replace 'lapizzalocarename' with the 'Ordering URL' from Customize Website.
- c. Leave the password alone. If you have cleared it, click cancel and start over.



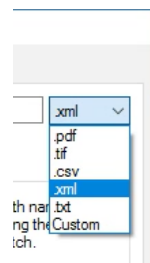
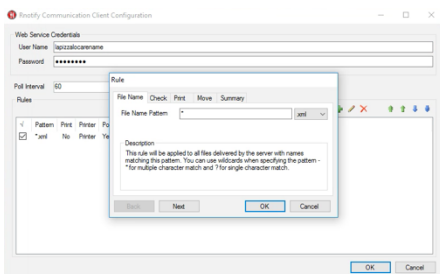
Web Service Credentials

User Name

Password

- 4) No open the printer set up by clicking on the Printer in the box below, this will open another box. Like shown

- a. On this first box change the file type to .txt instead of .xml, then click next



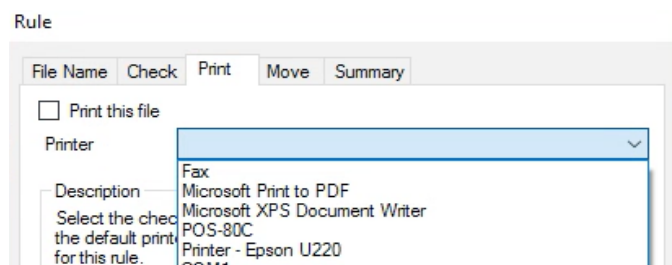
Rule

File Name Check Print

Poll Local Directory

Directory

- b. On this tab (Check) , uncheck the 'Poll Local Directory', then click next
- c. On this tab (Print), Check the box 'Print this file', then select the printer from the list you desire to use., then click next.



- d. If the LAN (ethernet) , or WLAN (wireless) printer is not set up yet, stop and do so now. Do not try and set up a serial or USB printer. This is not recommended.
- e. On this tab (Move), uncheck the box 'move this file', now click OK and than Ok again to close this set up feature. The connection is now set.

Rule

File Name Check Print Move Sur

Move this file

Directory